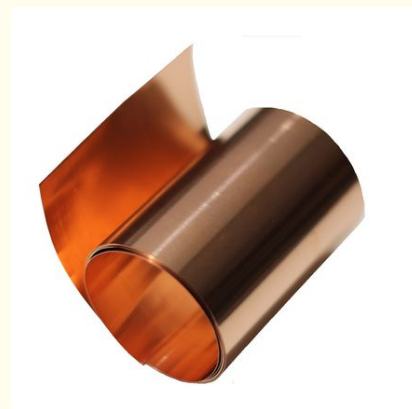


## Pure Bronze Copper Cathode Sheets Price Per Kg H59 H63 For Roofing Decoration

### Our Product Introduction

#### Basic Information

- Place of Origin: china
- Brand Name: ShengQuan
- Certification: ISO9001:2000
- Model Number: C10200 C10300 C11000 C12000 T1 T3
- Minimum Order Quantity: 1ton
- Price: USD1500-USD6000
- Packaging Details: Standard Export Sea-Worthy Packing
- Delivery Time: 5-15days
- Payment Terms: L/C, T/T, Western Union
- Supply Ability: 15000Tons



#### Product Specification

- Application: Industrial, Decorative, Construction, gasket, EDI Electrode
- Grade: Pure Copper, C10200, C11000, Red Copper
- Alloy Or Not: Non-alloy, Is Alloy
- Shape: Plate, Coil, Flat Sheet, Sheet/Plate
- Material: Brass, Bronze, C10100
- Cu (min): 99.90%, 99%, 65%
- Elongation ( $\geq$  %): 35%, 40, 20, 20--40%, > 15
- Thickness: 0.1mm~200mm, 0.2mm-3.0mm
- Surface: Bright, polished, mill, oiled
- Highlight: **Bronze copper cathode sheets, H59 copper cathode sheets, H63 copper cathode price per kg**



## Product Description

### Flat Cathode Pure Copper Sheet 99.99 Pure Bronze H59 H63 Roofing Brass For Decoration Brasses in Copper Sheets

Brasses are copper-zinc alloys with good strength and ductility, and the ability to be cold worked, qualities that improve with increased zinc concentration up to 35 percent. Brass comes in a variety of colors, ranging from red to bright yellow, depending on the quantity of zinc in the alloy. Brass alloys with specified zinc concentrations are known as gilding metals, commercial bronze, jewelry bronze, red brass, and cartridge brass. Brasses with a zinc content of 32 to 39 percent have excellent hot working properties but restricted cold workability.

#### Chemical composition

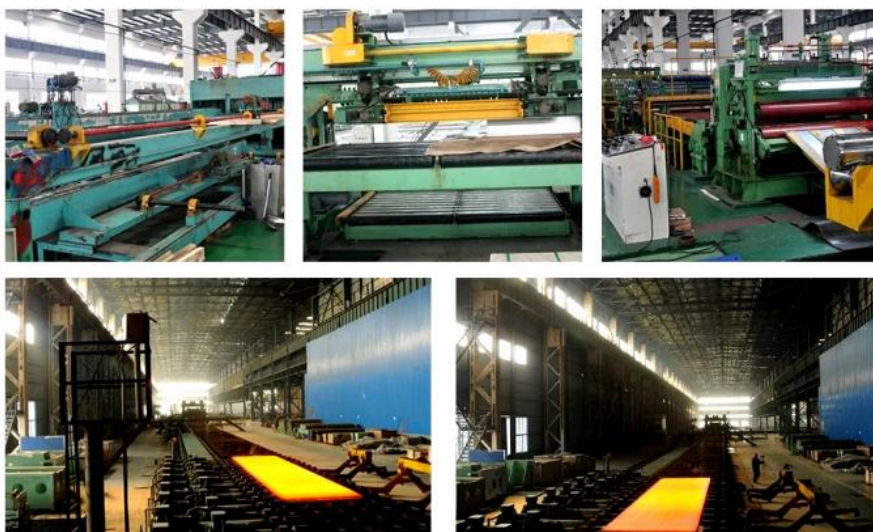
GB	Composition(%)			
	Cu	P	O	Other
TU1	99.97	0.002	Less than 0.002	balance
TU2	99.95	0.002	Less than 0.003	balance
T2	99.9	-	-	balance
TP1	99.9	0.04-0.012	-	balance
TP2	99.9	0.15-0.04	-	balance
C10200	99.9	0.001-0.005	-	balance
C11000	99.95	-	-	balance
C12200	99.9	0.004-0.012	-	balance
C12200	99.9	0.015-0.040	-	balance

Type	Pure Copper Plate
Grade	C10100 C11000 C12000 C10200 C21000 C22000 C23000 C24000 C26000 C27000 C27400 C28000 JIS C2100 C2200 C2300 C2400 C2600 C2680 C2729 C2800 C86500 C86400 C86200 C86300 C86400 C90300 C90500 C83600 C92200 C95400 C95800 EN CZ101 CZ102 CZ103 CZ106 CZ107 CZ109 CuZn5 CuZn10/15/20/30/35/40 GB H96 H90 H85 H80 H70 H68 H65 H62 H59
Typical Temper	O, 1/4H, 1/2H, H
Thickness	1-300mm
Standard	GB/T5231-2001, GB/T1527-2006, JISH3100-2006, JISH3250-2006, JISH3300-2006, ASTM B152M-06, ASTM B187, ASTM B75M-02, ASTM B42-02, etc
Width	600mm
Length	1500mm
Surface	Bright, polished, hair line, brush, sand blast, checkered, embossed, etching, etc.
Quality test	we can offer MTC (mill test certificate), SGS, BV, IQI, TUV, ISO, etc
Payment terms	T/T (30% DEPOSIT)
Stock or not	Enough stock
Sample	It's ok
Application	1) Kitchenware, food and chemical products processing and storage devices; 2) Aircraft fuel tanks, oil pipe, rivets, wire; 3) Cans cover, car body panels, steering plates, stiffeners, brackets and other components; 4) Manufacturing trucks, tower building, ship, train, furniture, machinery parts, precision machining with the tubes, rods, shaped, sheet metal.
Delivery time	Within 3-15 days



**Wuxi Shengquan Metal Products Co., Ltd.** is located in Wuxi City, Jiangsu Province. The company's products include seamless pipe, color coated plate, galvanized plate, aluminum plated plate, aluminum plate, copper plate, carbon steel pipe, wear-resistant plate, building materials, pipes and other products, which are widely used in chemical industry, pharmacy, electric power, shipbuilding, railway, automobile, papermaking and construction engineering. We ensure that customers are carefree in the whole process of product consultation, procurement, ordering and use! Over the years, the company has won the trust of our customers with high-quality products and first-class service. With your favor, our products are sold all over the world! We have customers in South America, North America and Southeast Asia. With the support of new and old customers, we will work harder and more enterprising to repay more customers with better and more efficient services.

### **Packing & Delivery**





### 1. Who are we?

We are based in wuxi, China, start from 2021, sell to Mid East(35.00%), South America(20.00%), Southeast Asia(20.00%), Africa(5.00%), Eastern Asia(5.00%), Northern Europe(5.00%), Southern Europe(5.00%), South Asia(5.00%). There are total about 51-100 people in our office.

### 2. How can we guarantee quality?

Always a pre-production sample before mass production;

Always final Inspection before shipment;

### 3. What can you buy from us?

steel sheet coil, ppgi pppl, galvanized steel coil, aluminum steel coil sheet, stainless steel

### 4. Why should you buy from us not from other suppliers?

Integrating the superior resources of China's steel industry, we provide customers with high-quality steel products at preferential prices, and can ensure that the goods are delivered to customers in a timely manner.

### 5. What services can we provide?

Accepted Delivery Terms: FOB, CFR, CIF, EXW, FCA, DDP, DDU, Express Delivery

Accepted Payment Currency: USD, EUR, CNY;

Accepted Payment Type: T/T, L/C, Credit Card, Western Union



**Wuxi Shengquan Metal Products Co., Ltd.**



15370898866



523639146@qq.com



metalsstainless-steel.com

Intersection of Xigang Road and Chuntang Road, Xishan District, Wuxi City